

PART OF THE NE.1/4, OF SECTION 22, T.7N., R.2W., S.L.B. & M.

472

# THOMPSON ESTATES SUBDIVISION

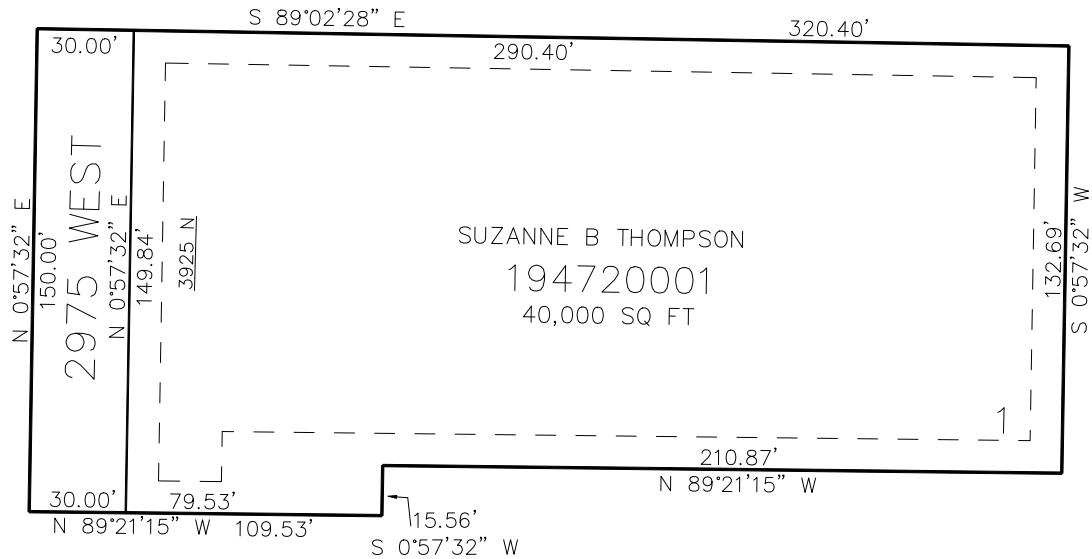
IN WEBER COUNTY

TAXING UNIT: 19

SCALE 1" = 30'

SEE PAGE 10-2

SEE PAGE 10-2



SEE PAGE 10-2

SEE PAGE 10-2

10' UTILITY & DRAINAGE EASEMENTS EACH  
SIDE OF PROPERTY LINES AS INDICATED  
BY DASHED LINES EXCEPT AS OTHERWISE  
SHOWN.

FOR COMPLETE SURVEY DATA SEE  
ORIGINAL DEDICATION PLAT IN  
BOOK 96, PAGE 76 OF RECORDS.